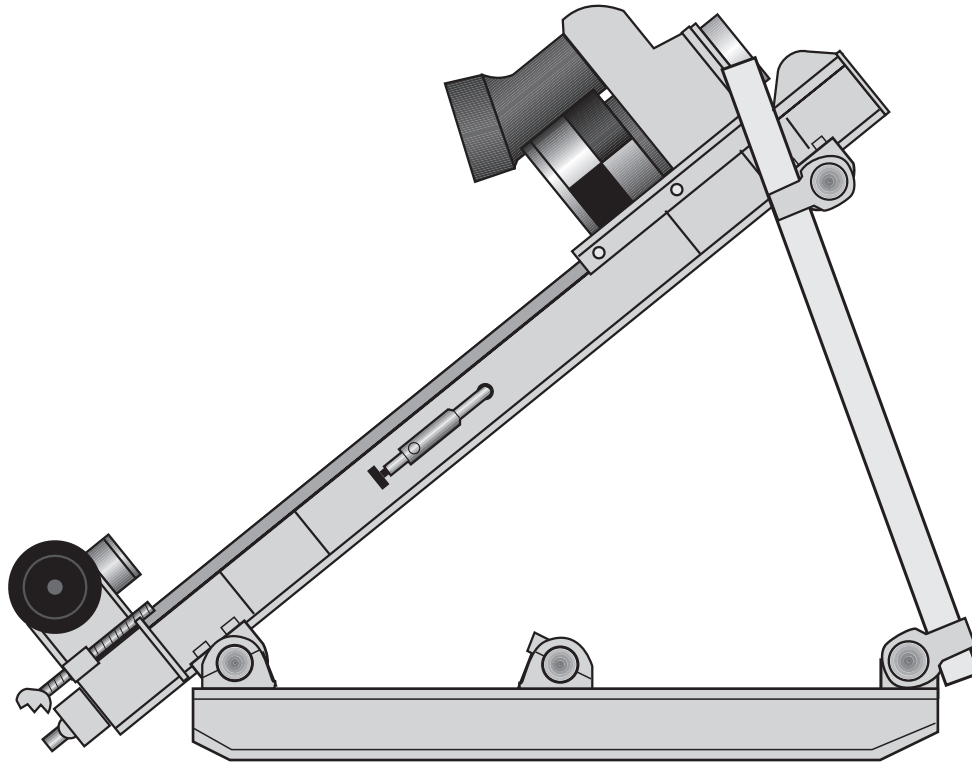


Atlas Copco Exploration Products

DIAMEC Diamond Core Drill



DIAMEC 232

Spare parts list



Contents

Feed frame	6
Feed frame assembly	3716 0034 836
Frame	10
Frame assembly	3716 0072 9110
Rotation unit	12
Rotation unit assembly	3716 0248 8212
Hydraulic motor	3716 0429 8016
Rod holder	18
Rod holder assembly	3716 0154 8118
Rod tong	3716 0147 8019
Control panel	20
Control panel assembly	3716 0186 8120
Valve assembly	3716 0186 8022
Hose kit	24
Hose kit complete	3716 0186 9124
Optional equipment	25
Reduce valve, RPM	3715 3983 8025
Column assembly, 7ft	3716 3252 8026
Column assembly, 9ft	3716 3252 8128
Column, 7ft	3144 0026 8030
Column, 9ft	3144 0025 8032
Machine holder	3719 0018 6834
Water collector	3715 3656 8335
Trido kit	3719 0059 3236
Hose kit for Trido	3719 0059 3938

English

To be read before ordering

- 1 When ordering spare parts, please state Description and part number of the spare part (not the Ref. no.) as well as drill type designation and serial number.
- 2 Parts which are included in a subassembly are given immediately after this part and are preceded by a dash in the description column.

Symbols that may occur:

- *) Placed instead of part number in part number column, means that the indicated part is normally not Delivered separately. Can be ordered as a kit, see point 2.
- ***) Optional
- A) When ordering, please state part number, hose dimension and length.
- B) See separate list according to the List of contents.

Deutsch

Vor der Ersatzteilbestellung lesen

- 1 Bei der Ersatzteilbestellung bitte die Teilbenennung und die Ersatzteilnummer (10-stellig), Ausführungstyp und Seriennummer der Maschine angeben.
- 2 Teile, die einer Montagegruppe angehören sind unmittelbar danach aufgegliedert und durch einen Strich in der Spalte "Bezeichnung" gekennzeichnet.

Verwendete Symbole:

- *) Ein Sternchen anstelle einer Teilnummer bedeutet, daß das so gekennzeichnete Teil normalerweise gesondert geliefert wird. Kann auch im Set bestellt werden, siehe Punkt 2.
- ***) Auf Sonderwunsch lieferbar.
- A) Bei Bestellung bitte Teilnummer und Schlauchgröße, -länge, -durchmesser usw. angeben.
- B) Siehe separate Liste.

Svenska

Läs detta innan du beställer reservdelar

- 1 Ange artikelns namn och detaljnummer (inte bara Ref. nr.) och även maskinens typ- och serienummer vid beställning av reservdelar.
- 2 Delar som ingår i huvudartikeln nämns efter denna och föregås av ett streck i "Beskrivningskolumnen".

Teckenförklaring:

- *) Ersätter detaljnummer, vilket innebär att detaljen vanligtvis inte levereras separat utan ingår i en sats, se punkt 2.
- ***) Extra utrustning
- A) Ange detaljnummer, slangdimension och längd.
- B) Se innehållsförteckningen.

Français

Information pour la commande

- 1 Prière de spécifier la description et le numéro de la pièce (et non sa référence) ainsi que la designation de type et le numéro de série de la machine ou de l'unité.
- 2 Les pièces faisant partie d'un sous-ensemble partiel sont indiquées immédiatement après celui-ci et sont précédées d'un tiret dans la colonne de la description.

Symboles utilisés:

- *) Placé au lieu du numéro de pièce, dans la colonne du numéro de pièce, pour indiquer que la pièce n'est normalement pas livrée séparément. Voir point 2 pour savoir si la pièce est également livrée en kit.
- ***) Option.
- A) Lors de la commande, prière de spécifier le numéro de pièce ainsi que la longueur et les dimensions du flexible.
- B) Voir a liste séparée selon Sommaire.

Español**Considerar antes de hacer un pedido**

- 1 Al solicitar piezas de repuesto, sirvase indicar la designación y el número de la pieza (No su número de referencia) así como el tipo de maguina y número de serie.
- 2 Las piezas que forman parte de un subconjunto vienen relacionadas inmediatamente después del subconjunto y vienen precedidas de un guión.

Indicacion de los simbolos:

- *) Colocados en lugar número de la pieza significa que la pieza indicada no se suministra separadamente. Se puede pedir como parte de juego. Ver punto 2 arriba.
- ***) Opcional
- A) Cuando efectue el pedido, indicar la designación de la pieza y el diámetro de la manguera, longitud, etc.
- B) Ver en lista a parte de acuerdo con la relación de contenido.

Italiano**Leggere prima di ordinare**

- 1 Quando ordinate un ricambio, per favore indichiate "Description", "part number" ma non il "Ref. no." e, possibilmente, modello e numero di serie della macchina.
- 2 I ricambi che sono inclusi in un sottoinsieme sono elencati immediatamente dopo questa parte e sono preceduti da un trattino nella colonna "Description".

Simbolo utilizzati:

- *) Collocato, in sostituzione del "part number" nell' apposita colonna indica che quel ricambio normalmente non è consegnabile separatamente. Può essere ordinato solo in un kit, vedi punto 2.
- ***) Accessorio
- A) Trattandosi di flessibili idraulici, preghiamo specificare, oltre al "part number", anche dimensioni e lunghezza.
- B) Consultare la lista specifica facendo riferimento all' indice.

Português**Leia antes de encomendar**

- 1 Quando efectuar um pedido de peças, indique a sua designação e o número da peça (e não a sua referência) bem como o tipo de máquina a que se destinam e o seu número de série.
- 2 As peças que fazem parte de um conjunto são indicadas imediatamente após esse conjunto e são precedidas por um traço, na coluna à sua descrição.

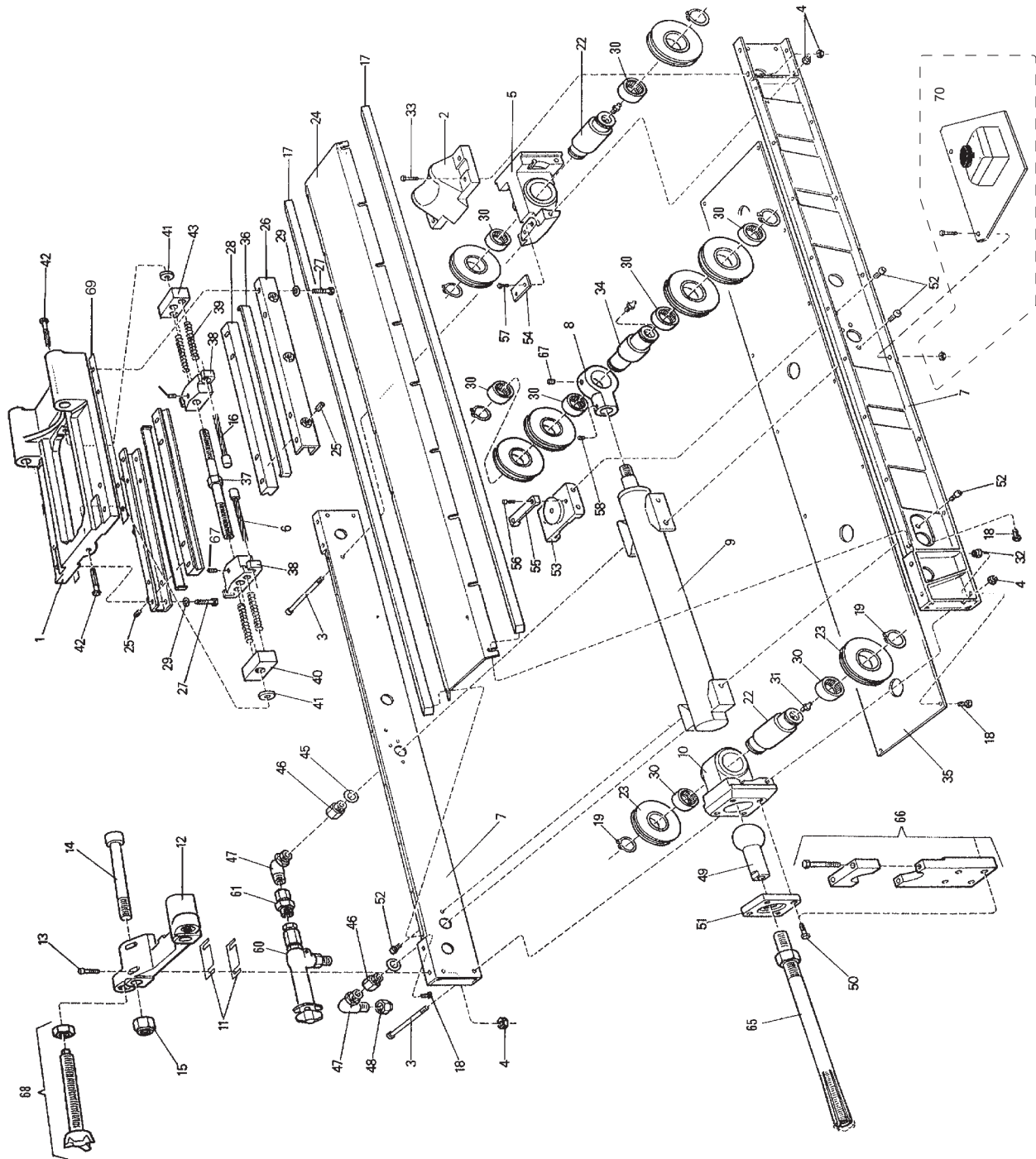
Simbolos utilizados:

- *) Colocado na coluna das referências significa que peça não é fornecida separadamente. A peça deverá fazer parte de um conjunto. Leia ponto 2.
- ***) Opcional.
- A) Quando efectuar o pedido, indique a designação da peça e o diâmetro da mangueira, comprimento.
- B) Consulte a lista em anexo, conforme mencionado no conteúdo.

Feed frame

Feed frame assembly

3716 0034 83

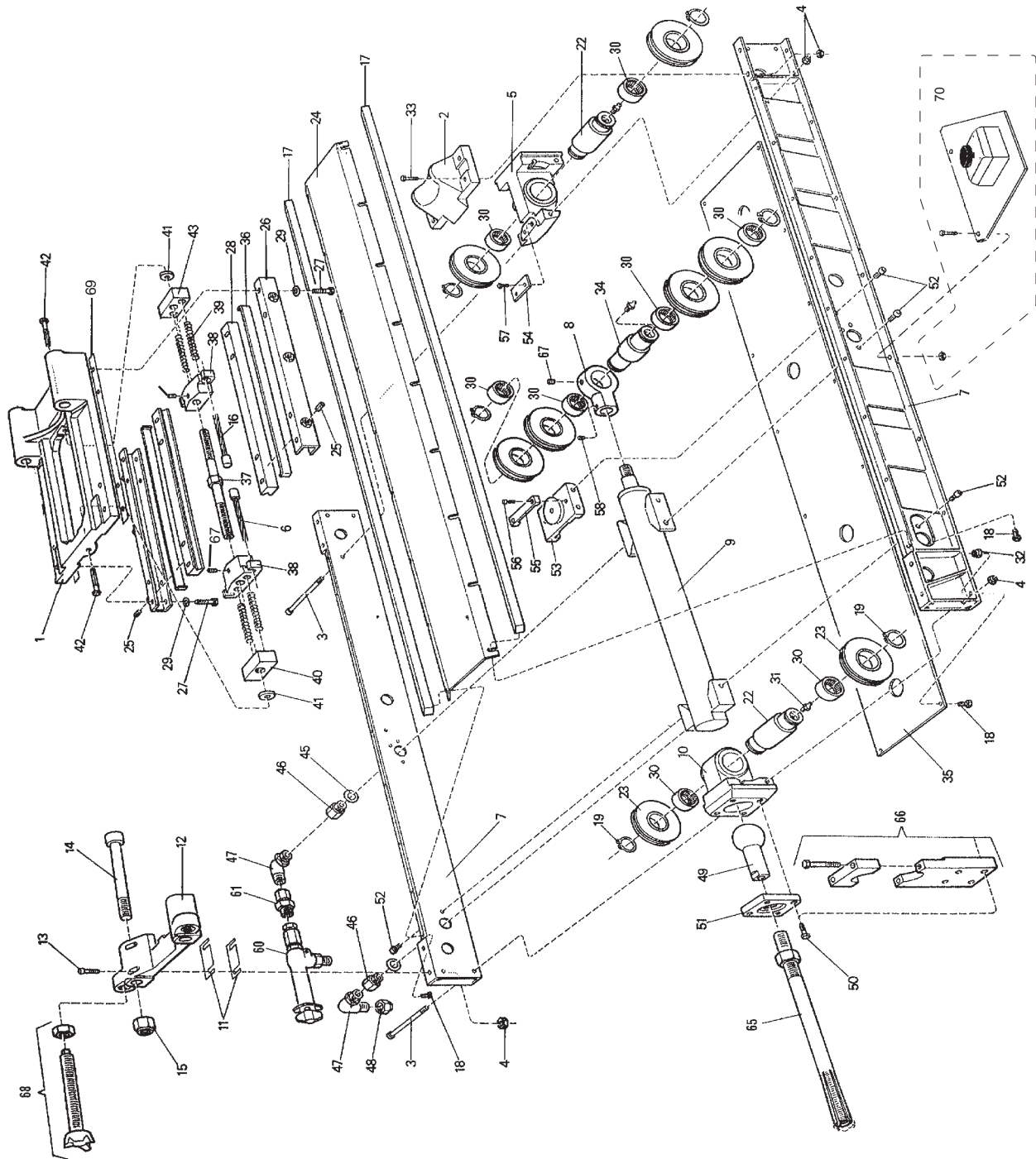


3716 0034 83				
Pos. No.	Part number	Quantity	Description	Remark
0	3716 5818 00	1	Insert	
0	3716 5821 00	1	Protection	
1	3716 0369 00	1	Cradle	ÄMNE 3716 0369-70
2	3716 0370 00	1	Cover	ÄMNE 3716 0370-70
3	0211 1381 00	5	Cap screw	MC6S 10 x 130
4	0291 1111 00	13	Lock nut	M10 LM6M 6924-8
5	3716 0371 00	1	End piece	ÄMNE 3716 0371-70
6	3716 0270 00	1	Wire	
7	3716 0037 00	1	Feed beam	
8	3716 0279 00	1	Yoke	
9	3716 0168 00	1	Cylinder	HYDRAUTO 50/25-425
10	3716 0372 00	1	End piece	
11	3716 0158 00	14	Shim	T=0.5
12	3716 0366 00	1	Bracket	
13	0211 1365 00	4	Cap screw	MC6S 10 x 40 Din 912
14	0211 1567 00	2	Cap screw	MC6S 20 x 150
15	0291 1116 00	2	Lock nut	M20 LM6M
16	3716 0271 00	1	Wire	
17	3716 0063 00	2	Guide bar	
18	0147 1322 03	30	Screw	M6S 8 x 16 FZB
19	0335 1140 00	6	Circlip sga 40	SGA 40 DIN 471
22	3716 0277 00	2	Shaft	
23	3716 0275 00	8	Pulley	
24	3716 0373 00	1	Plate	
25	0190 1360 00	6	Set screw	P6SS 10 x 20
26	3716 1005 00	2	Channel	
27	0147 1368 03	8	Screw m10x55 fzb	M6S 10 x 55
28	3716 1004 00	2	Guide shoe	
29	0301 2344 00	8	Washer	BRB 10.5 x 20 x 2
30	3716 1857 00	8	Bearing	HK 4016 2RS
31	0544 2106 00	3	Lub. Nipple	M6 x l
32	0291 1110 00	16	Lock nut	M8 LM6M
33	0211 1364 00	4	Cap screw	MC6S 10 x 35
34	3716 0278 00	1	Shaft	
35	3716 0374 00	1	Plate	
36	3716 1003 00	2	Plate	
37	3716 0055 00	1	Nut	
38	3716 0043 00	2	Wire bracket	
39	3716 0059 00	4	Spring	15 x 67.5
40	3716 0048 00	1	Nut	
41	3716 0047 00	2	Washer	
42	0211 1329 00	2	Cap screw	MC6S 8 x 45
43	3716 0044 00	1	Nut	
45	0661 1033 00	2	Seal washer	TREDO 18
46	3715 1881 00	2	Nipple	
47	3176 6565 00	3	Elbow	R 1/2" x UN 7/8"

Feed frame

Feed frame assembly

3716 0034 83

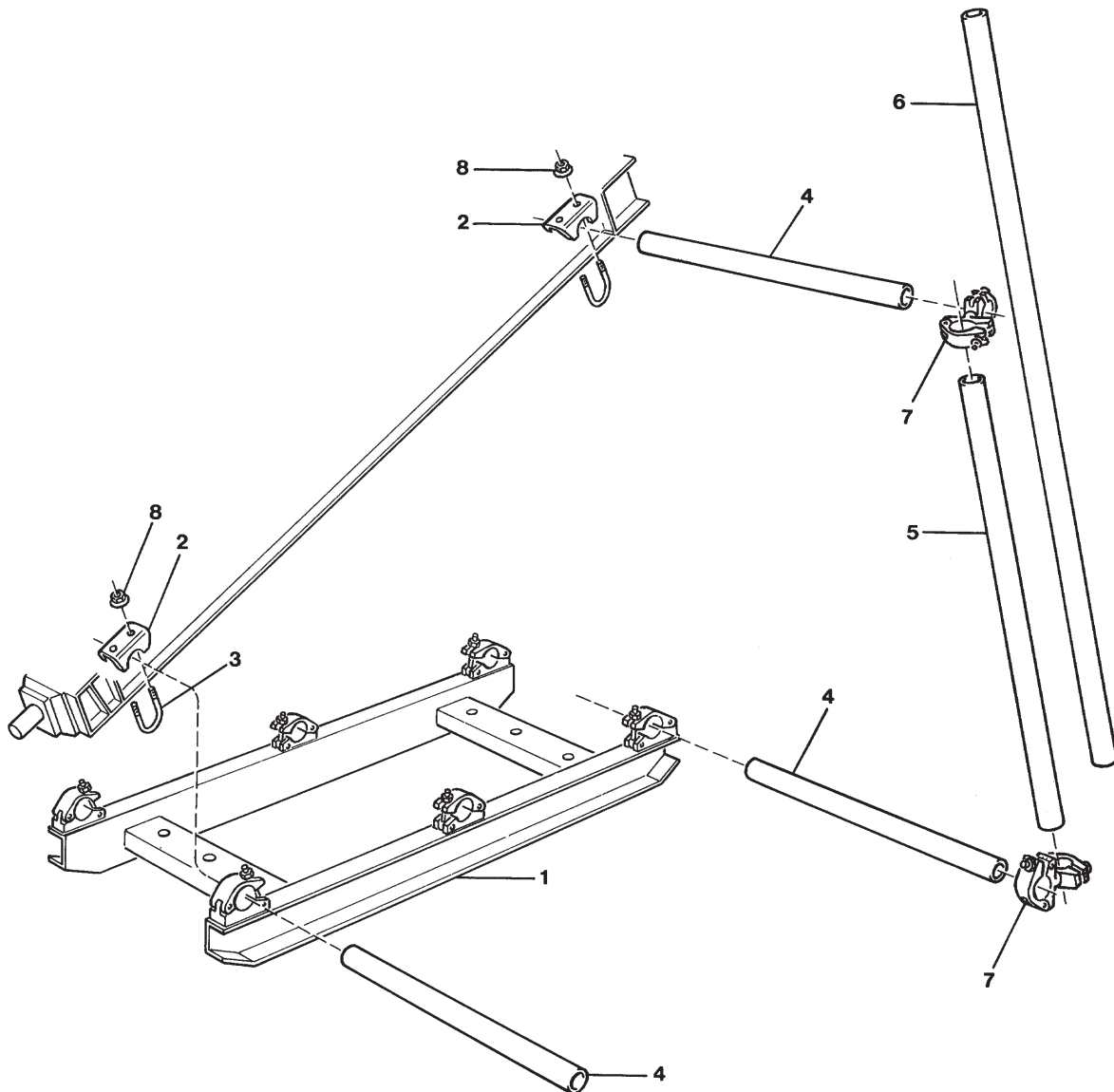


3716 0034 83				
Pos. No.	Part number	Quantity	Description	Remark
48	3715 0597 00	2	Cap	UN 7/8"-14
49	3716 0189 00	1	Ball joint	
50	0147 1407 03	4	Screw	M6S 12 x 60
51	3715 0110 00	1	Flange	
52	0211 1359 00	10	Cap screw	MC6S 10 x 16
53	3716 0171 00	1	Bracket	
54	3716 0301 00	1	Lock plate	
55	3716 0238 00	1	Clamp	
56	0211 1246 00	2	Cap screw	MC6S 6 x 16
57	0147 1246 03	2	Screw	M6S 6 x 16 FZB
58	0196 1319 00	1	Set screw	SK6SS 8 x 10
60	3715 3880 80	1	Valve, pressure relieving	
61	3176 8490 00	1	Nipple	UN 7/8" x R 1/2"
65	3716 0274 00	1	Expander bolt	
66	3716 0347 80	1	Casing clamp	55 mm
66	3716 0347 81	1	Casing clamp	58 mm
66	3716 0347 82	1	Casing clamp	65 mm
66	3716 0347 83	1	Casing clamp	74 mm
66	3716 0347 84	1	Casing clamp	86 mm
67	0196 1322 00	3	Set screw	SK6SS 8 x 16
68	3715 0142 80	2	Set screw	
69	3716 0385 00	4	Shim	T = 2.5
70	3716 5570 00	1	Emergency stop	

Frame

Frame assembly

3716 0072 91

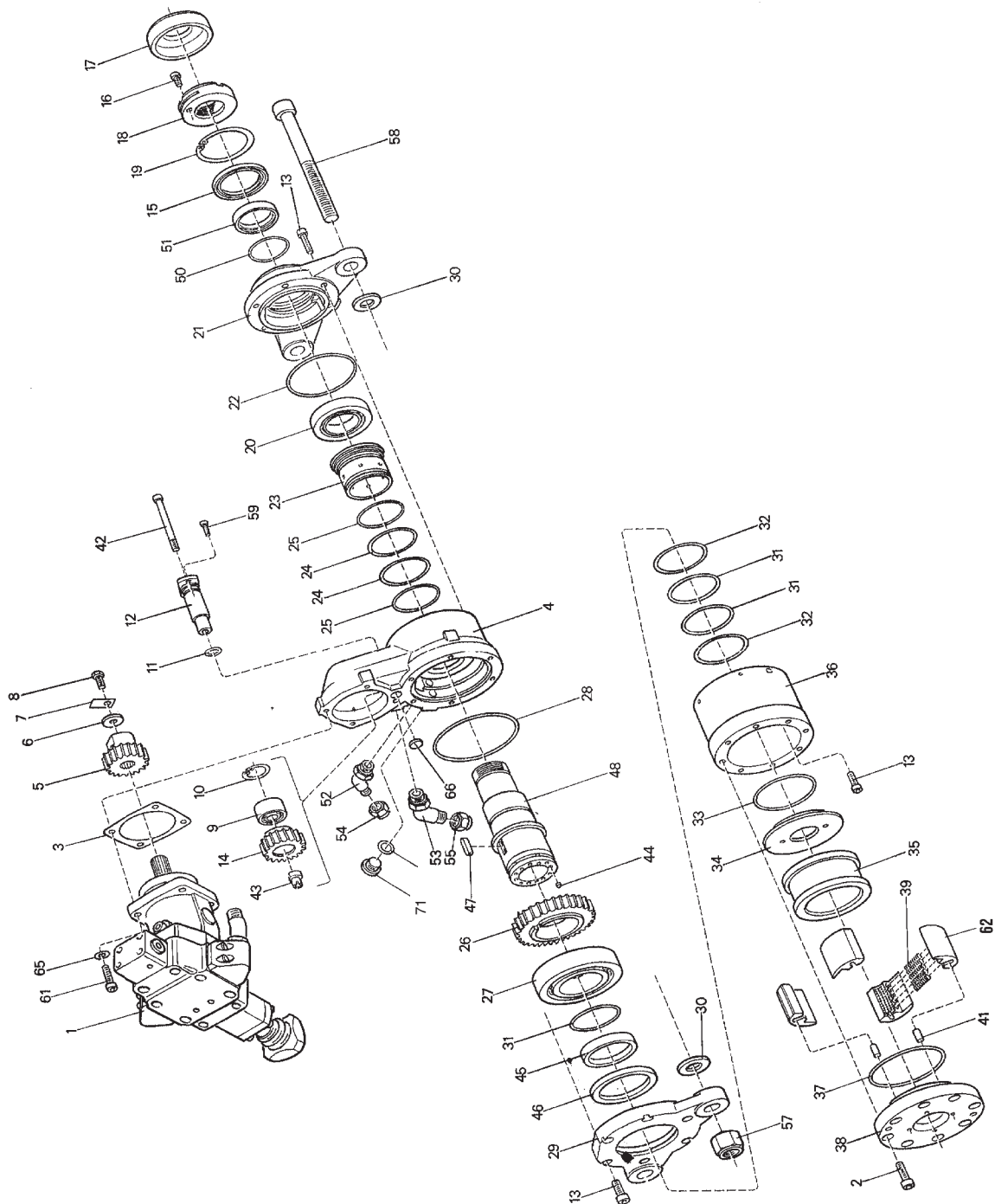


3716 0072 91				
Pos. No.	Part number	Quantity	Description	Remark
1	3716 0072 00	1	Frame	
2	3716 0073 00	4	Clamp	
3	3716 0074 00	4	Bracket	
4	3716 0375 00	4	Stay	600 mm
5	3716 0376 00	1	Stay	900 mm
6	3716 0377 00	4	Stay	1500 mm
7	3716 0079 00	10	Clamp	49 x 49
8	0291 1162 00	8	Lock nut	M6MF M12 FZB ISO 7043

Rotation unit

Rotation unit assembly

3716 0248 82

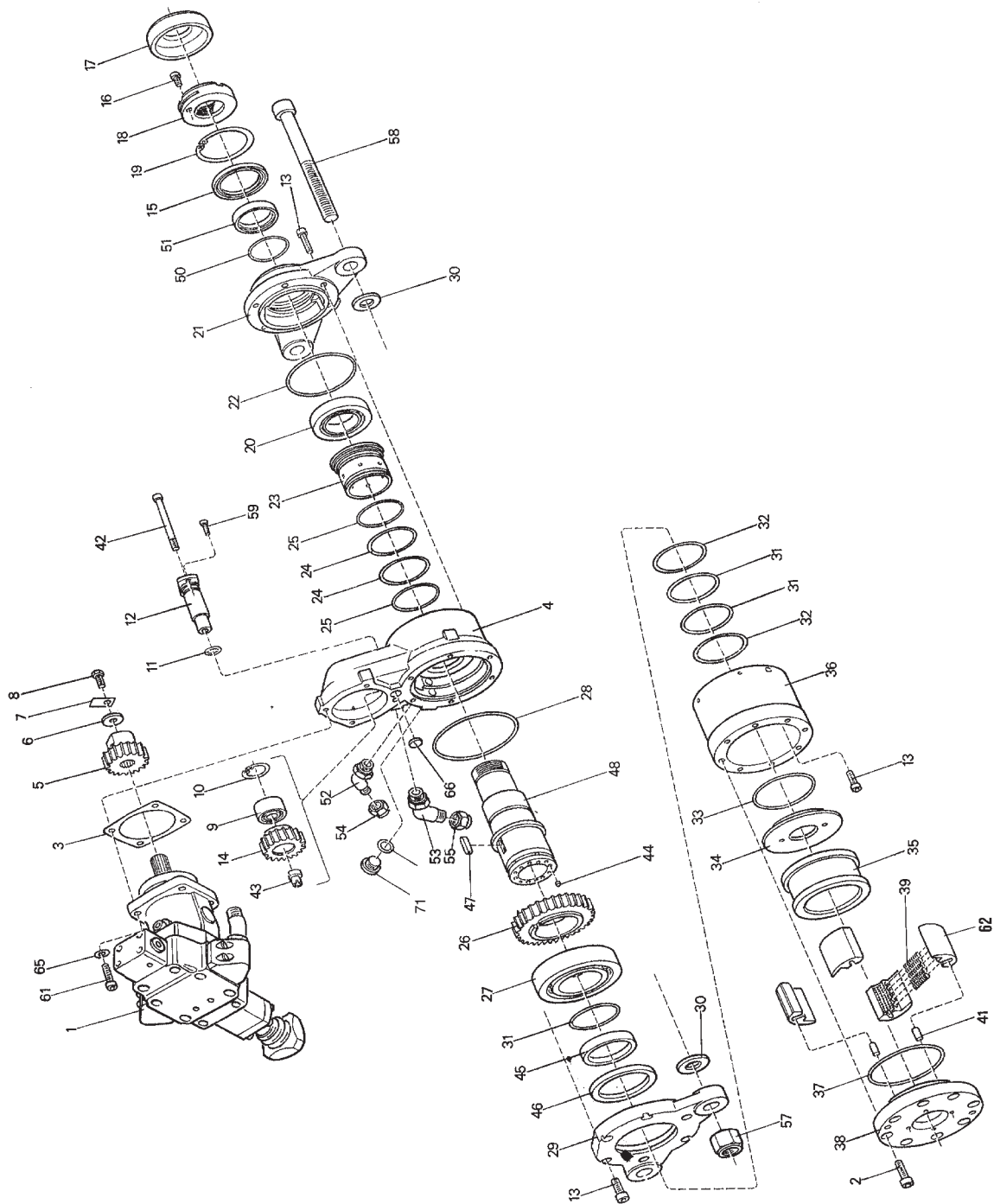


3716 0248 82				
Pos. No.	Part number	Quantity	Description	Remark
1	3716 0429 80	1	Hydraulic motor	28cc variable
2	0211 1363 00	8	Cap screw	MC6S 10 x 30
3	3715 3211 00	1	Gasket	
4	3716 0379 00	1	Housing	ÄMNE 3716 0379-70
5	3716 0249 00	1	Pinion	
6	3716 0014 00	1	Washer	
7	3716 0015 00	1	Lock plate	
8	0147 1323 03	1	Screw	M6S 8 x 20 FZB
9	0504 2502 00	1	Ball bearing	3302 ATN9
10	0335 2141 00	1	Circlip	SGH 42 DIN 472
11	0663 2122 00	1	O-ring	15.3 x 2.4 70 GR
12	3716 0251 00	1	Shaft	
13	0211 1325 00	18	Cap screw	MC6S 8 x 25
14	3716 0250 00	1	Gear wheel	
15	0666 6000 11	1	Seal	BAB SL 70 X 90 X 7
16	0211 1321 00	1	Cap screw	MC6S 8 x 14
17	3716 0164 00	1	Cap	
18	3716 0008 00	1	Top nut	
19	0335 2165 00	1	Circlip	SGH 90 DIN 472
20	0508 1100 18	1	Bearing	NU 1012 ML
21	3716 0367 00	1	Cover	
22	0663 6146 00	1	O-ring	109.5 x 3 70 GR
23	3716 0012 00	1	Distributor	
24	0663 6139 00	2	O-ring	74.5 x 3 70 GR
25	0661 1536 00	2	Back-up ring	75 x 80 x 1.3
26	3716 0006 00	1	Gear wheel	
27	0502 2116 00	1	Ball bearing	6216
28	0663 6152 00	1	O-ring	139.5 x 3
29	3716 0368 00	1	Cover	
30	0300 0274 08	4	Plain washer	SBRB 21 x 37 x 4 DIN
31	0663 6140 00	3	O-ring	79.5 x 3
32	0661 1537 00	2	Back-up ring	80 x 85 x 1.3
33	0663 6143 00	1	O-ring	94.5 x 3 70 GR
34	3716 0262 00	1	Wear washer	
35	3716 0022 00	1	Rubber muff	
36	3716 0181 00	1	Housing	CHUCKHUS
37	0663 6149 00	1	O-ring	124.5 x 3
38	3716 0182 00	1	Cover	
39	3716 0268 00	20	Spring	
41	3716 0261 00	4	Parallel pin	10p6 x 20
42	0211 1336 00	1	Cap screw	MC6S 8 x 80
43	3716 0252 00	1	Shaft	
44	3715 3202 00	6	Plug	8.4 X 10
45	3716 0010 00	1	Wear ring	
46	0666 6000 22	1	Seal	90 x 110 x 7.5/8.5
47	0337 7188 00	1	Parallel key	RK H9 12 x 8 x 22

Rotation unit

Rotation unit assembly

3716 0248 82

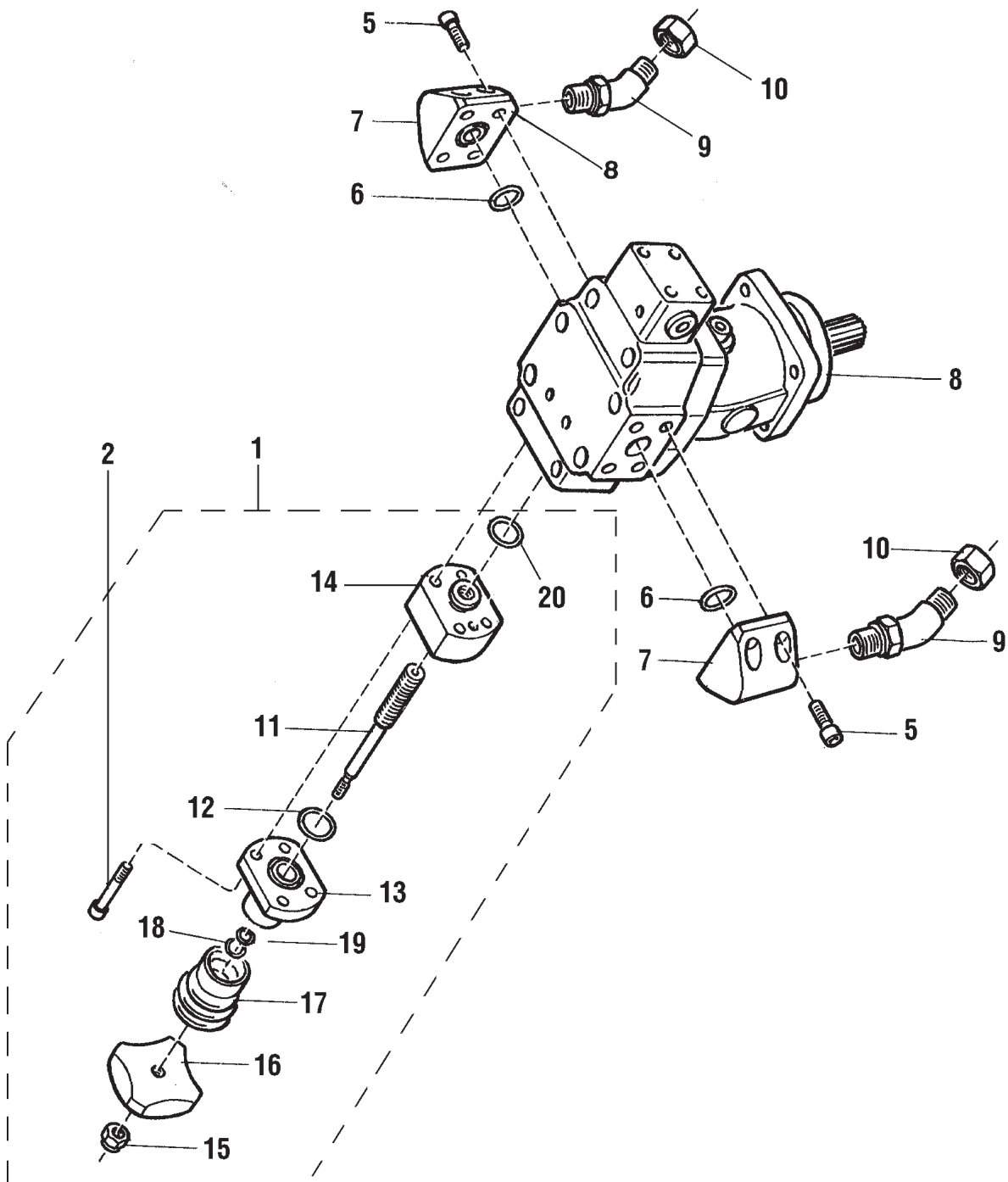


3716 0248 82				
Pos. No.	Part number	Quantity	Description	Remark
48	3716 0003 00	1	Spindle	
50	0663 6136 00	1	O-ring	59.5 x 3 70 GR
51	3716 0009 00	1	Wear ring	
52	3176 6553 00	1	Elbow	45GRA. UN 3/4 x R 3/8
53	3176 6554 00	1	Elbow	45GRA. UN 7/8 x R 1/2
54	3176 5313 00	1	Cap	UN 3/4"- 16
55	3715 0597 00	1	Cap	UN 7/8"-14
56	3716 5577 03	1	Sign	ROTATION UNIT
57	0291 1116 00	2	Lock nut	M20 LM6M
58	0211 1569 00	2	Cap screw	MC6S 20 x 180
59	0211 1246 00	2	Cap screw	MC6S 6 x 16
61	0211 1363 00	4	Cap screw	MC6S 10 x 30
62	3716 0025 00	4	Chuck jaw	44mm, AQ
62	3716 0132 00	4	Chuck jaw	34 mm
62	3716 0346 00	4	Chuck jaw, Tungsten carbide	34 mm
62	3716 0344 00	4	Chuck jaw, Tungsten carbide	44 mm
63	3715 8807 00	1	Plug	UN 3/4 x 16
64	0661 1029 00	1	Seal washer	TREDO 118
65	0661 1014 00	1	Seal washer	TREDO 12
66	3716 2831 00	1	Gasket	

Rotation unit

Hydraulic motor

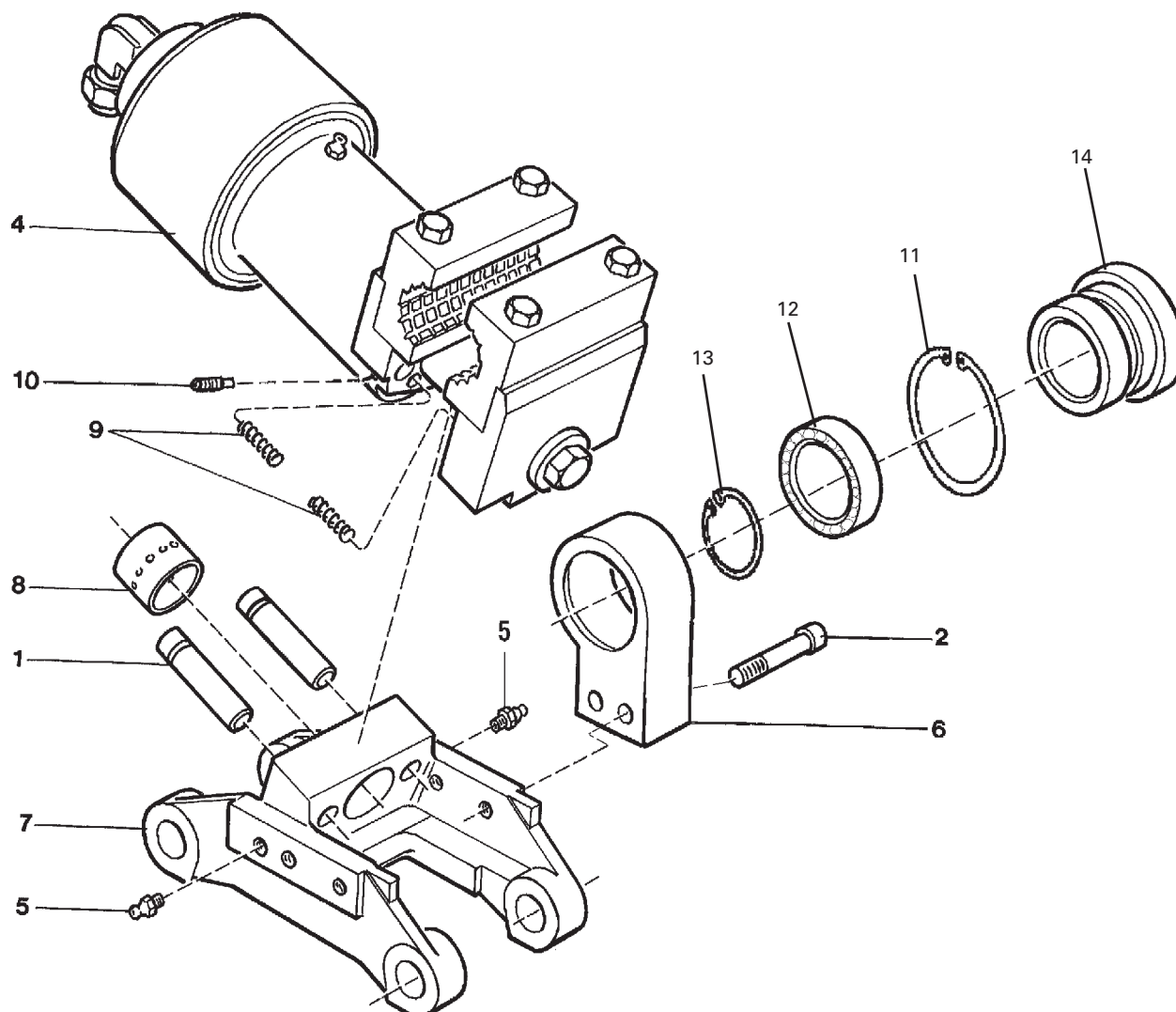
3716 0429 80



3716 0429 80				
Pos. No.	Part number	Quantity	Description	Remark
1	3716 0257 82	1	Speed regulator	
2	0211 1327 00	4	Cap screw	MC6S 8 x 35 12.9
5	0215 0003 46	8	Cap screw	10 x 16 MC6LS
6	0663 2128 00	2	O-ring	26.2 x 3 70 Grader
7	3716 0256 00	2	Hose adapter	
8	3716 0429 00	1	Hydraulic motor, 28cc variable	
9	3176 6554 00	2	Elbow	45GRA. UN 7/8 x R 1/2
10	3715 0597 00	2	Cap	UN 7/8"-14
11+14	3716 0426 80	1	Spindle + cover	
12	0663 2126 00	1	O-ring	22.2 x 3
13	3716 0428 00	1	Cover	
15	0291 1110 00	1	Lock nut	M8 LM6M
16	3716 0317 00	1	Knob	
17	3715 0353 00	1	Bellows	V6-289
18	0661 1503 00	1	Back-up ring	13 x 9 x 1.3
19	0663 2115 00	1	O-ring	8.3 x 2.4
20	0663 9184 00	1	O-ring	26.58 x 3.53

Rod holder

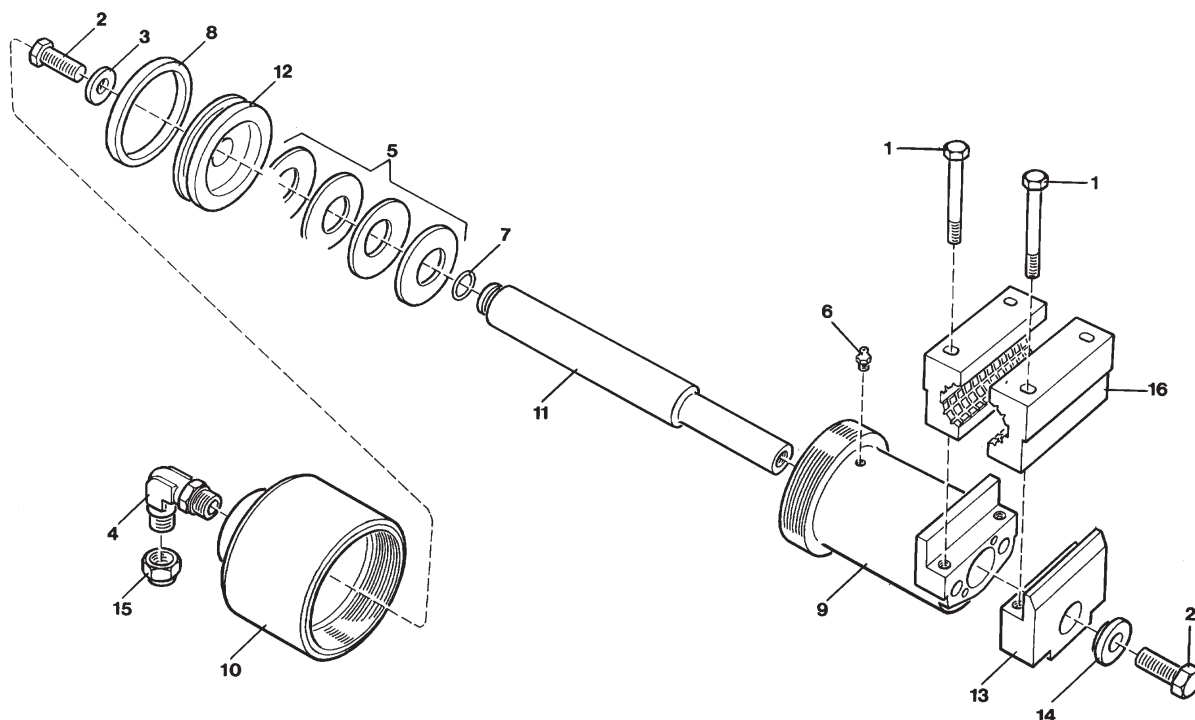
Rod holder assembly

3716 0154 81

3716 0154 81

Pos. No.	Part number	Quantity	Description	Remark
1	3716 0353 00	2	Parallel pin	
2	0211 1365 00	2	Cap screw	MC6S 10 x 40 Din 912
4	3716 0147 80	1	Hydr. Grip	
5	0544 2162 00	2	Lub. Nipple	H1 KR 1/8
6	3716 0438 00	1	Guide	
7	3716 0154 00	1	Bracket	
8	3716 0161 00	2	Bushing	GLY PG 303415
9	3716 0159 00	4	Spring	STECE 12380
10	0192 1319 00	2	Set screw	T6SS M8 x 10
11	0335 2167 00	1	Circlip	SGH 95
12	0502 1238 01	1	Ball bearing	SKF 6012-2RS1
13	0335 1151 00	1	Circlip	SGA 60
14	3716 0442 00	1	Guide sleeve	38 mm
14	3716 0443 00	1	Guide sleeve	48,5 mm

Rod holder

Rod tong

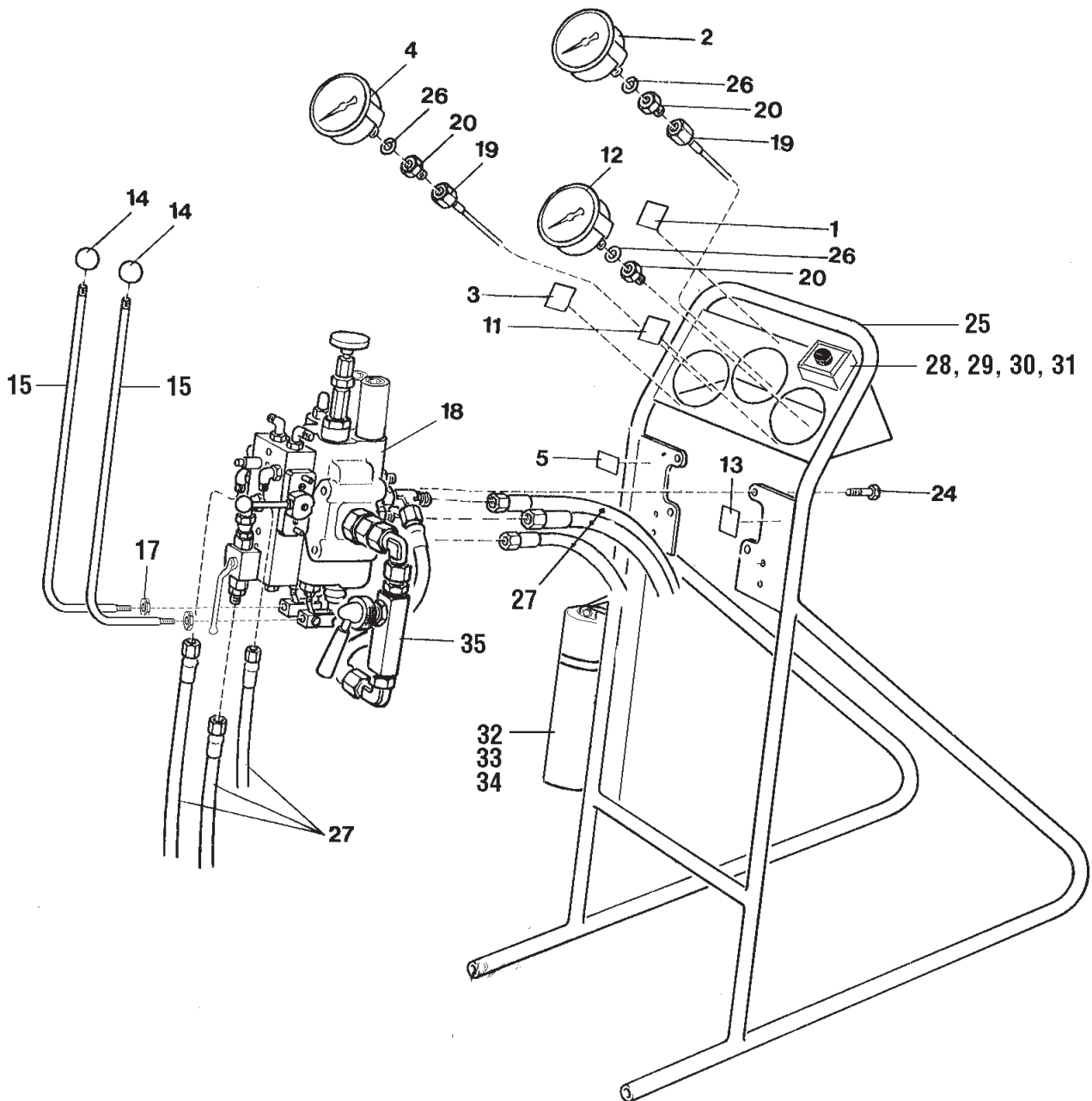
3716 0147 80

3716 0147 80

Pos. No.	Part number	Quantity	Description	Remark
1	0147 1410 03	4	Screw	M6S M12 x 75 8.8 FZB
2	0147 1477 03	2	Screw	M6S 16 x 40 DIN 933 FZB
3	3716 0231 00	1	Washer	TBR SB 17 X 42 X 8
4	3176 6564 00	1	Elbow	R 1/2 x UN 3/4-16
5	0384 3595 00	30	Disc spring	80 x 41 x 5
6	0544 2162 00	1	Lub. Nipple	H1 KR 1/8
7	0663 2127 00	1	O-ring	24.2 x 3.0 70 GR
8	0667 4230 00	1	Collar	95 x 110 x 12
9	3716 0147 00	1	Housing	
10	3716 0148 00	1	Cylinder	
11	3716 0149 00	1	Piston rod	
12	3716 0150 00	1	Piston	
13	3716 0151 00	1	Jaw holder	
14	3716 0152 00	1	Spacer	
15	3176 5313 00	1	Cap	UN 3/4"- 16
16	3716 0165 00	2	Jaw	34 mm
16	3716 0153 00	2	Jaw	44 mm
16	3716 2176 00	2	Jaw, Tungsten carbide	34 mm
16	3716 2178 00	2	Jaw, Tungsten carbide	44 mm

Control panel

Control panel assembly

3716 0186 81

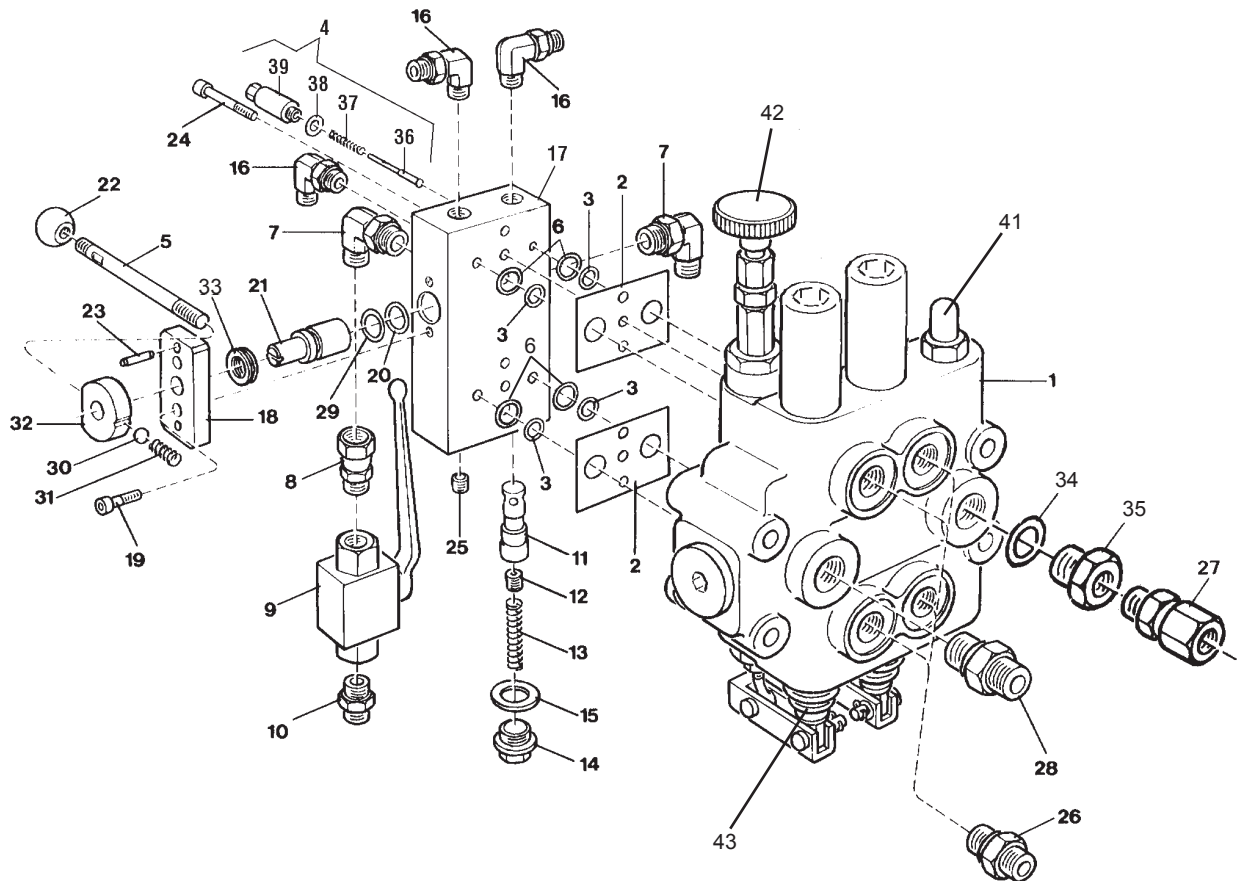


3716 0186 81				
Pos. No.	Part number	Quantity	Description	Remark
-	3716 5819 00	1	Insert	
-	0160 6047 00	0	Slotted screw	MCS 4 x 35
-	3716 5570 90	1	Cable set e-stop	
-	3716 5818 00	1	Insert	
-	3716 5823 00	2	Protection	
1	3716 5565 03	1	Sign	Feed pressure
2	3716 0180 00	1	Pressure gauge	
3	3716 5565 01	1	Sign	System pressure
4	3176 6023 00	1	Pressure gauge	0-400 bar-psi, d 100
5	3716 5565 12	1	Sign	Rotation
11	3716 5565 02	1	Sign	Water pressure
12	3176 6020 00	1	Pressure gauge	0-60
13	3716 5565 11	1	Sign	Feed
14	0362 1109 00	2	Ball knob	40 x M10 Black
15	3716 3286 00	2	Handle	
17	0261 2111 00	2	Hex. Nut	ML6M 10
18	3716 0186 80	1	Control panel	
19	3716 0195 00	2	Hose	6 x 400
20	3176 7851 00	3	Nipple	UN 9/16-18 x R 3/8 TYPE B
24	0147 1397 03	4	Screw	M6S 12 x 16
25	3716 0172 00	1	Stand	
26	0653 0905 11	3	Gasket	KBM R 3/8" COPPER
27	3716 0186 91	1	Hose set	
-	3716 0186 90	1	Plug set	
28	3716 5564 00	1	E-stop	
29	0147 1179 03	2	Screw	M6S 4 x 40 8.8 FZB
30	0291 1106 00	2	Lock nut	M4
31	0301 2315 00	2	Washer	4,3 x 9
32	3217 9498 00	1	Fire extinguisher	
33	0291 1108 00	3	Lock nut	M6 LM6M
34	0147 1247 03	3	Screw	M6S 6 x 20 FZB
	3716 0186 92	1	Seal kit	
35	3716 0473 00	1	RPM reduc. valve	
	3716 0186 93	1	Hose kit	15 m
	3716 2810 90	1	RPM counter	

Control panel

Valve assembly

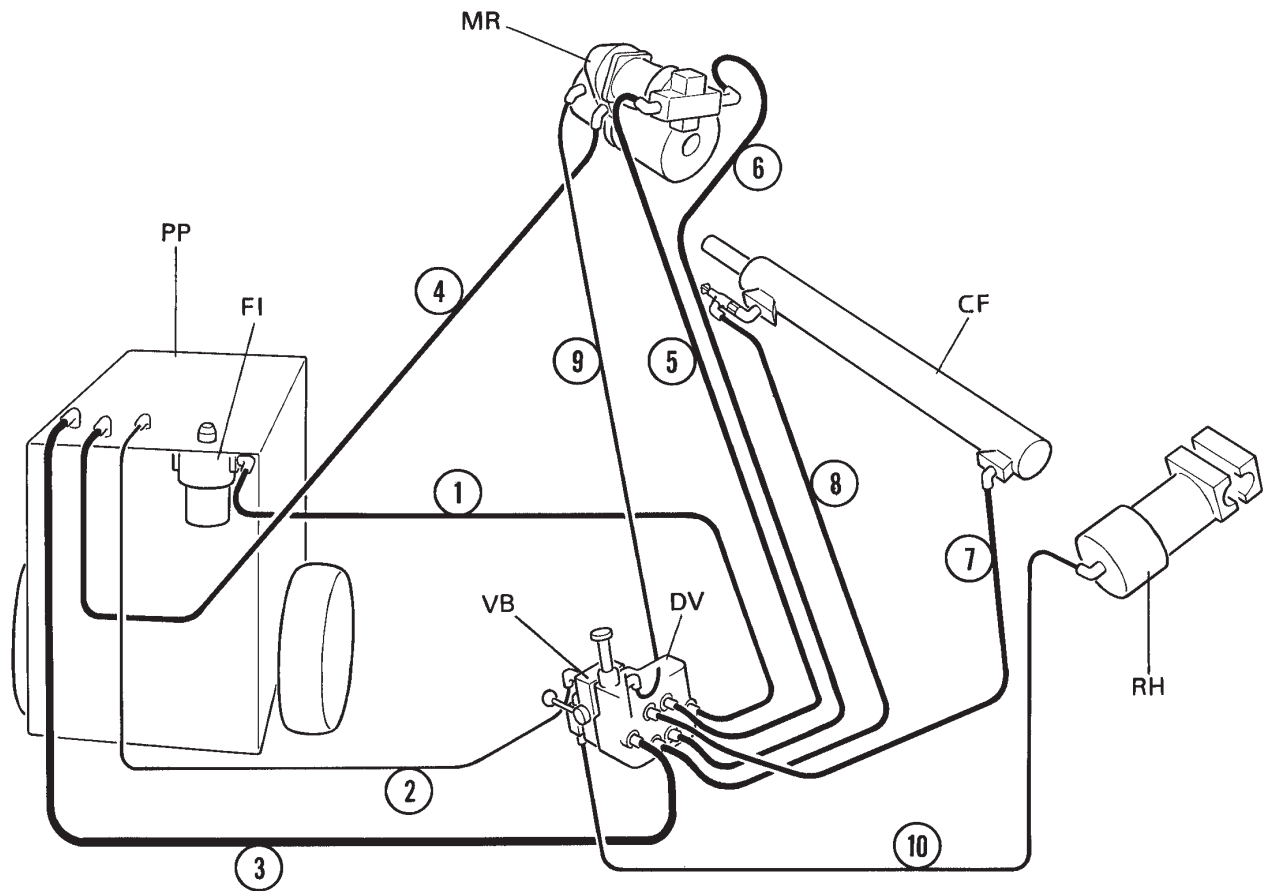
3716 0186 80



3716 0186 80				
Pos. No.	Part number	Quantity	Description	Remark
1	3716 0407 00	1	Valve	VDSP 22CC-314
2	3716 0141 00	2	Plate	
3	0663 6118 00	4	O-ring	11.1 x 1.6 70 GR
4	3715 8436 90	1	Check valve	250. 251. 260. 232
5	3716 0170 00	1	Lever	
6	0661 1505 01	4	Back-up ring	7 x 11 x 1.3
7	3176 6344 00	2	Elbow	UN 3/4 x R 3/8 90GR
8	3176 8270 00	1	Nipple	UN 3/4" x R 3/8"
9	3715 0590 00	1	Ball valve	KHB-G3/8-12/112-ZK-G
10	3176 6512 00	1	Nipple	R 3/8 - UN 3/4
11	3715 3138 00	1	Spool	
12	3715 6441 00	1	Nozzle	M8 X 10 0.7MM
13	3715 3136 00	1	Spring	
14	3715 3309 00	1	Plug	BLANK 0686 3716 06
15	0661 1026 00	1	Seal washer	TREDO 16-3/8"
16	3176 6351 00	3	Elbow	R 1/4 x UN 9/16-18
17	3716 0137 00	1	Valve block	
18	3716 0240 00	1	Cover	
19	0211 1246 00	2	Cap screw	MC6S 6 x 16
20	0663 2120 00	1	O-ring	13.3 x 2.4 70 GR NITRIL
21	3716 0138 00	1	Shaft	
22	0362 1115 00	1	Ball knob	WN 03- 25-M8 SVART
23	0108 1325 00	2	Spring pin	FRP 6 x 22
24	0211 1252 00	6	Cap screw	MC6S 6 x 40
25	0196 1320 00	1	Set screw	SK6SS 8 x 12
26	3176 6515 00	4	Nipple	UN 7/8 x R 1/2
27	3176 8490 00	1	Nipple	UN 7/8" x R 1/2"
28	3176 6517 00	1	Nipple	UN 1 1/16-R 3/4
29	0661 1512 00	1	Back-up ring	14 x 18 x 1.3
30	0517 1162 00	1	Bearing ball	RB-8/G20T
31	3715 6196 00	1	Spring	
32	3716 0239 00	1	Lever hub	
33	0510 0101 00	1	Bearing	51101 J9
34	0661 1038 00	1	Seal washer	TREDO 20-3/4"
35	0605 8826 00	1	Bushing	
36	3715 8435 00	1	Poppet	
37	3715 3135 00	1	Spring	
38	0661 1014 00	1	Seal washer	
39	3715 8436 00	1	Plug	
41	3716 0186 02	1	Relief valve	
42	3716 4649 01	1	Feed valve	
43	3716 0186 03	2	Protector	
16A	3715 0584 00	1	Elbow	UN 9/16xUN 9/16

Hose kit

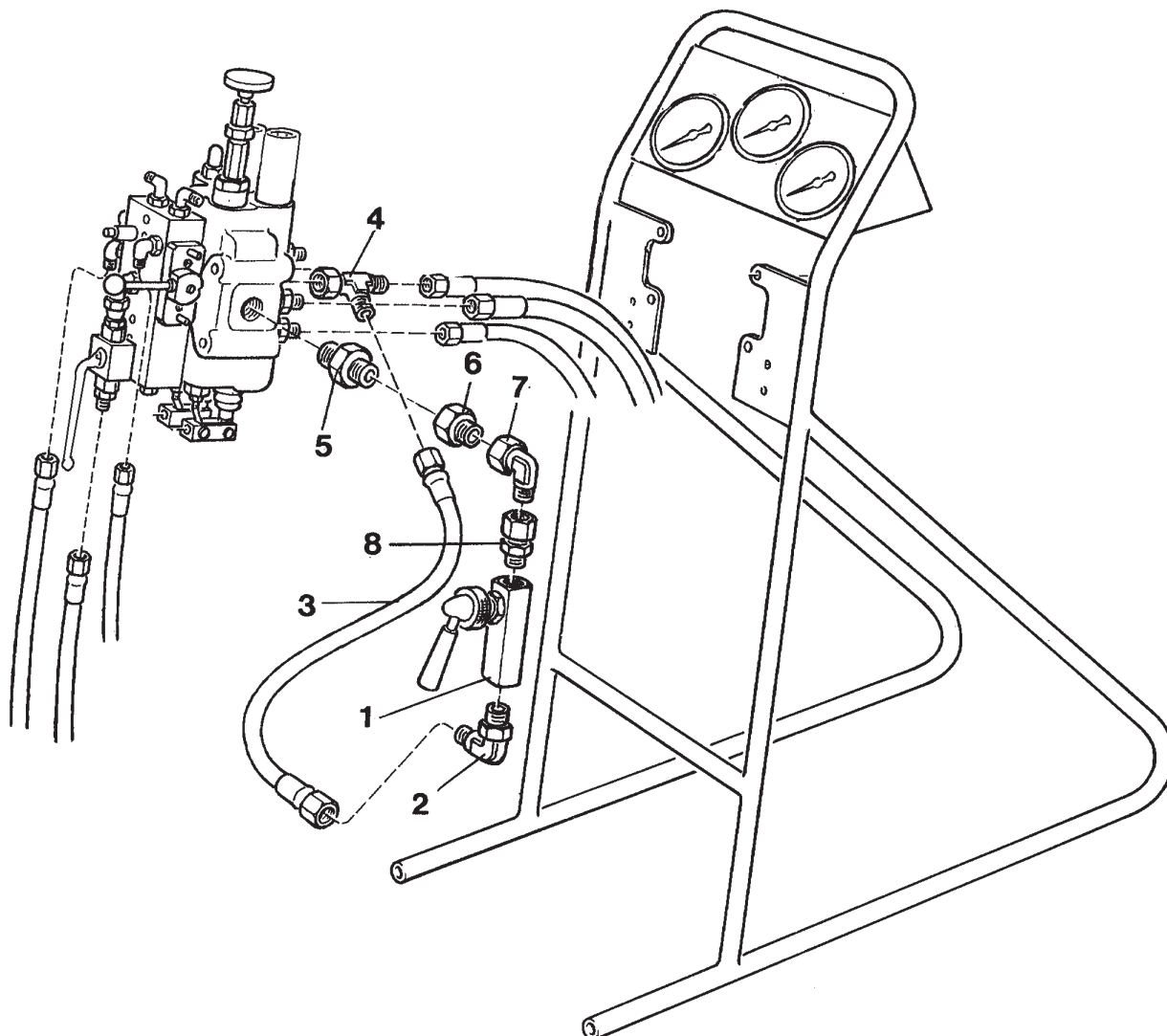
Hose kit complete

3716 0186 91

3716 0186 91

Pos. No.	Part number	Quantity	Description	Remark
-	0574 0294 11	1	Hose	L = 6000 mm, 6xR2 JIC 9/16-18
-	0605 8823 00	1	Bushing	TYP 3 (G 3/4" X G 3/8")
-	0661 1038 00	1	Seal washer	TREDO 20-3/4"
-	3163 1660 00	12	Hose strip	L=350 mm B=25mm
-	3176 6352 00	1	Elbow	R 3/8" x UN 9/16"
1	3716 0363 00	1	Hose	L = 6000 mm, 13xR2 UF JIC 7/8-14x2
2	0574 0294 11	1	Hose	L = 6000 mm, 6xR2 JIC 9/16-18
3	0574 3044 11	1	Hose	L = 6000 mm, 20xR2 JIC 1 1/16-12
4	0574 2300 11	1	Hose	L = 9000 mm, 13xR2 JIC 7/8-14
5	3176 7099 00	1	Hose	L = 4000 mm, 13xR2 JIC 7/8-14
6	3176 7099 00	1	Hose	L = 4000 mm, 13xR2 JIC 7/8-14
7	3176 7099 00	1	Hose	L = 4000 mm, 13xR2 JIC 7/8-14
8	3176 7099 00	1	Hose	L = 4000 mm, 13xR2 JIC 7/8-14
9	3176 3737 00	1	Hose	L = 4000 mm, 10xR2 JIC 3/4-16
10	0574 1290 11	1	Hose	L = 4600 mm, 10xR2 JIC 3/4-16

Optional equipment

Reduce valve, RPM

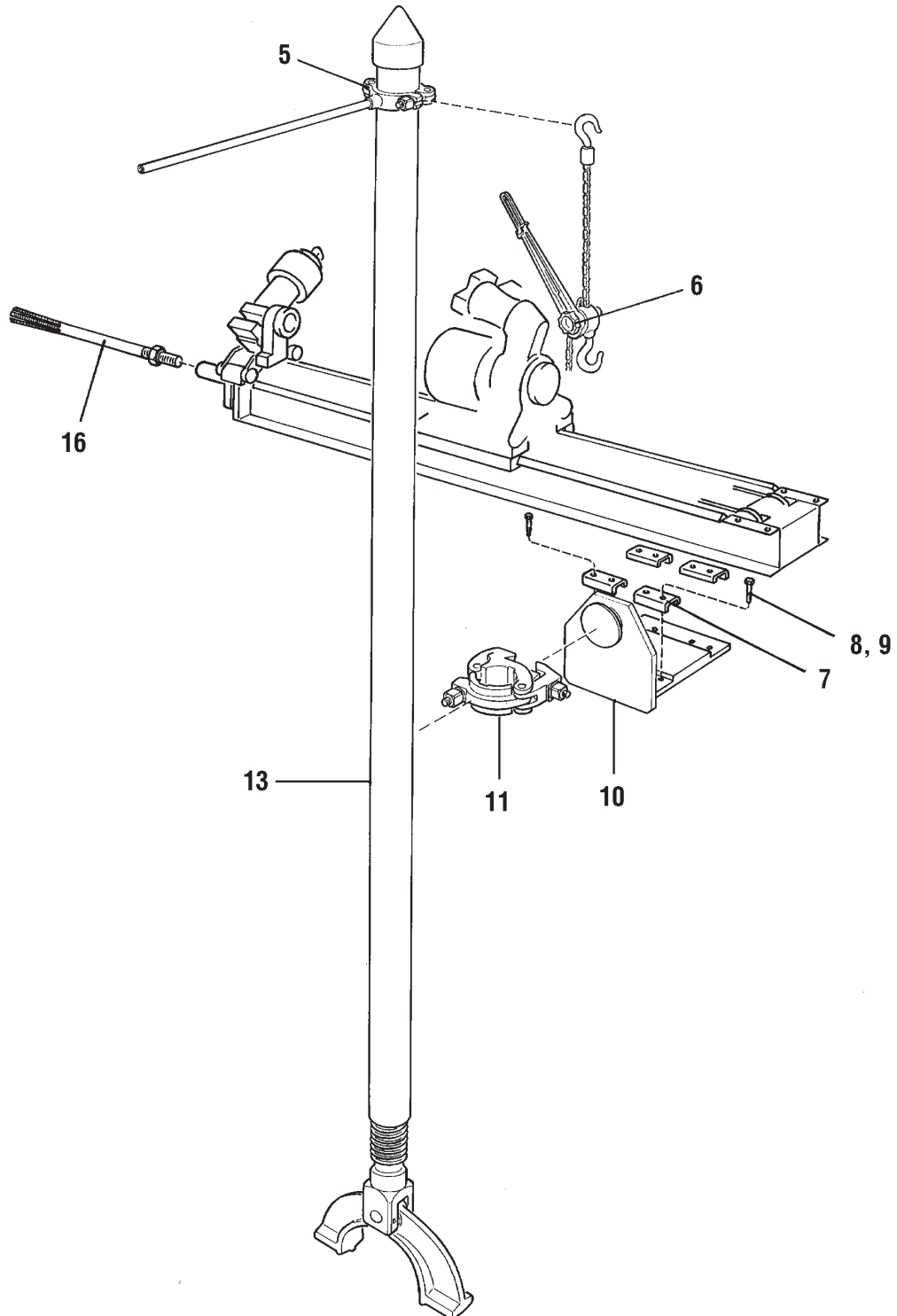
3715 3983 80

3715 3983 80

Pos. No.	Part number	Quantity	Description	Remark
1	3716 0473 00	1	Flow regulator	0-24 l
2	3176 6565 00	1	Elbow	R 1/2" x UN 7/8"
3	3176 6861 00	1	Hose	L = 500mm, 13xR2 JIC 7/8-14
4	3176 6590 00	1	Tee	UN 7/8 x UN 7/8
5	3715 0587 00	1	Nipple	1 1/16 x 1 5/16
6	3176 6505 00	1	Nipple	UN 1 1/16 x 7/8
7	3715 0585 00	1	Elbow	UN 7/8 U x UN 7/8 l
8	3176 8490 00	1	Nipple	UN 7/8" x R 1/2"

Optional equipment

Column assembly, 7ft

3716 3252 80

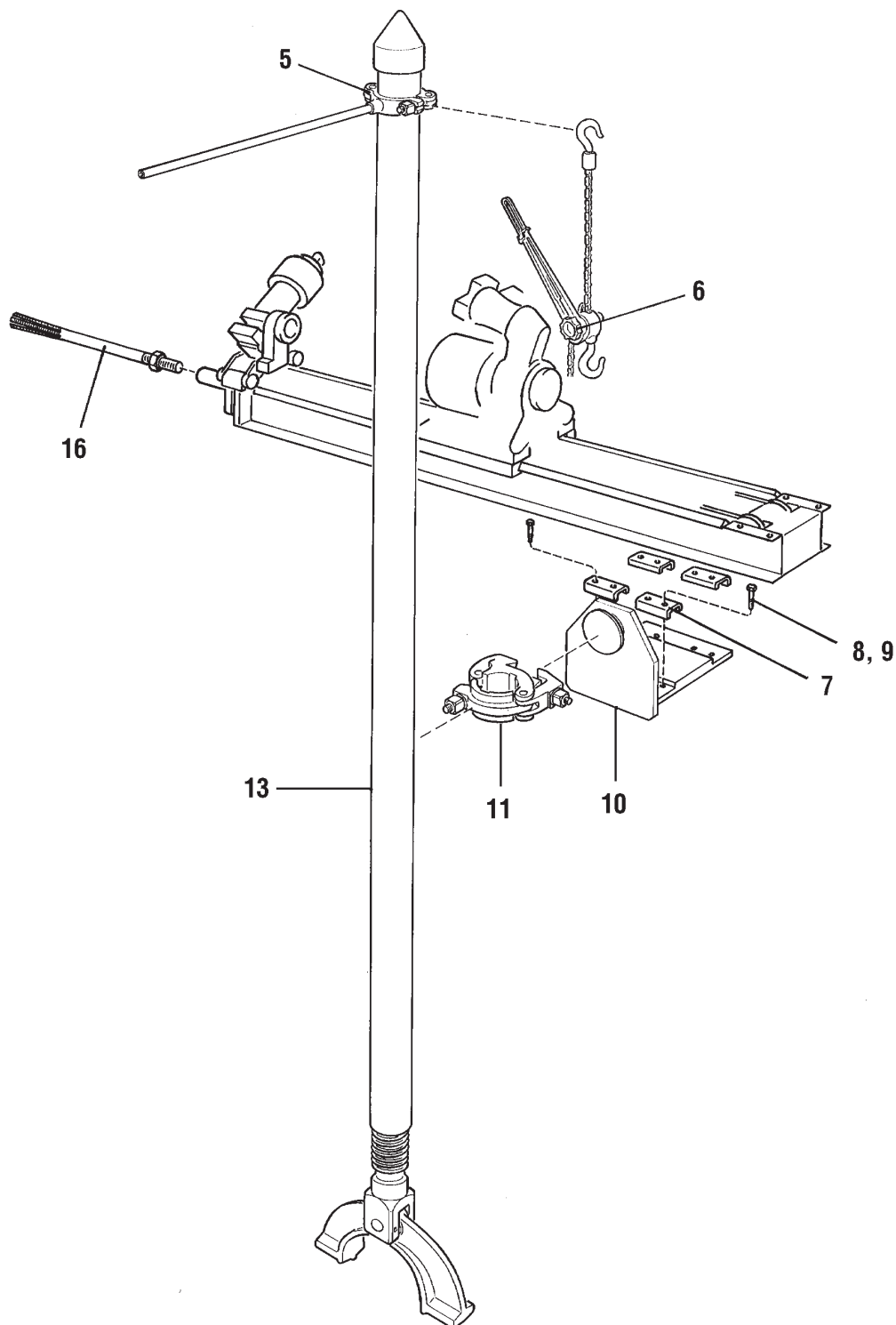


3716 3252 80				
Pos. No.	Part number	Quantity	Description	Remark
5	3719 0018 87	1	Stop ring	
6	3715 0904 00	1	Snatch block	
7	3716 3253 00	4	Clamp	
8	0301 2358 00	8	Washer	BRB 13 x 24 x 2.5
9	0147 1405 03	8	Screw	M6S 12 x 50 FZB
10	3716 3252 00	1	Bracket	
11	3719 0018 68	1	Column machine holder	
13	3144 0026 80	1	Column	7 ft
16	3716 0274 00	1	Expander bolt	

Optional equipment

Column assembly, 9ft

3716 3252 81

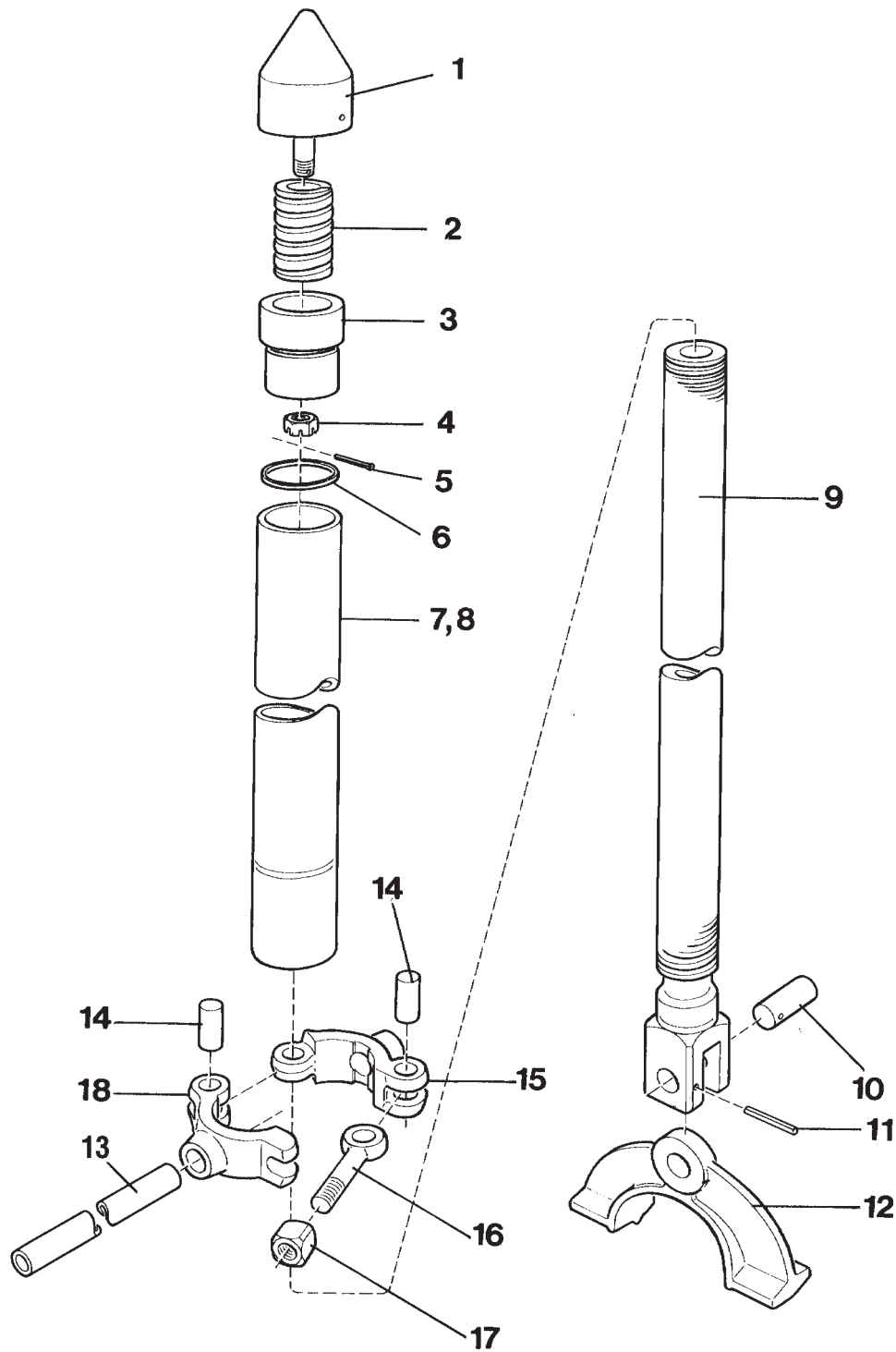


3716 3252 81				
Pos. No.	Part number	Quantity	Description	Remark
5	3719 0018 87	1	Stop ring	
6	3715 0904 00	1	Snatch block	
7	3716 3253 00	4	Clamp	
8	0301 2358 00	8	Washer	BRB 13 x 24 x 2.5
9	0147 1405 03	8	Screw	M6S 12 x 50 FZB
10	3716 3252 00	1	Bracket	
11	3719 0018 68	1	Column machine holder	
13	3144 0025 80	1	Column	9 ft
16	3716 0274 00	1	Expander bolt	

Optional equipment

Column, 7ft

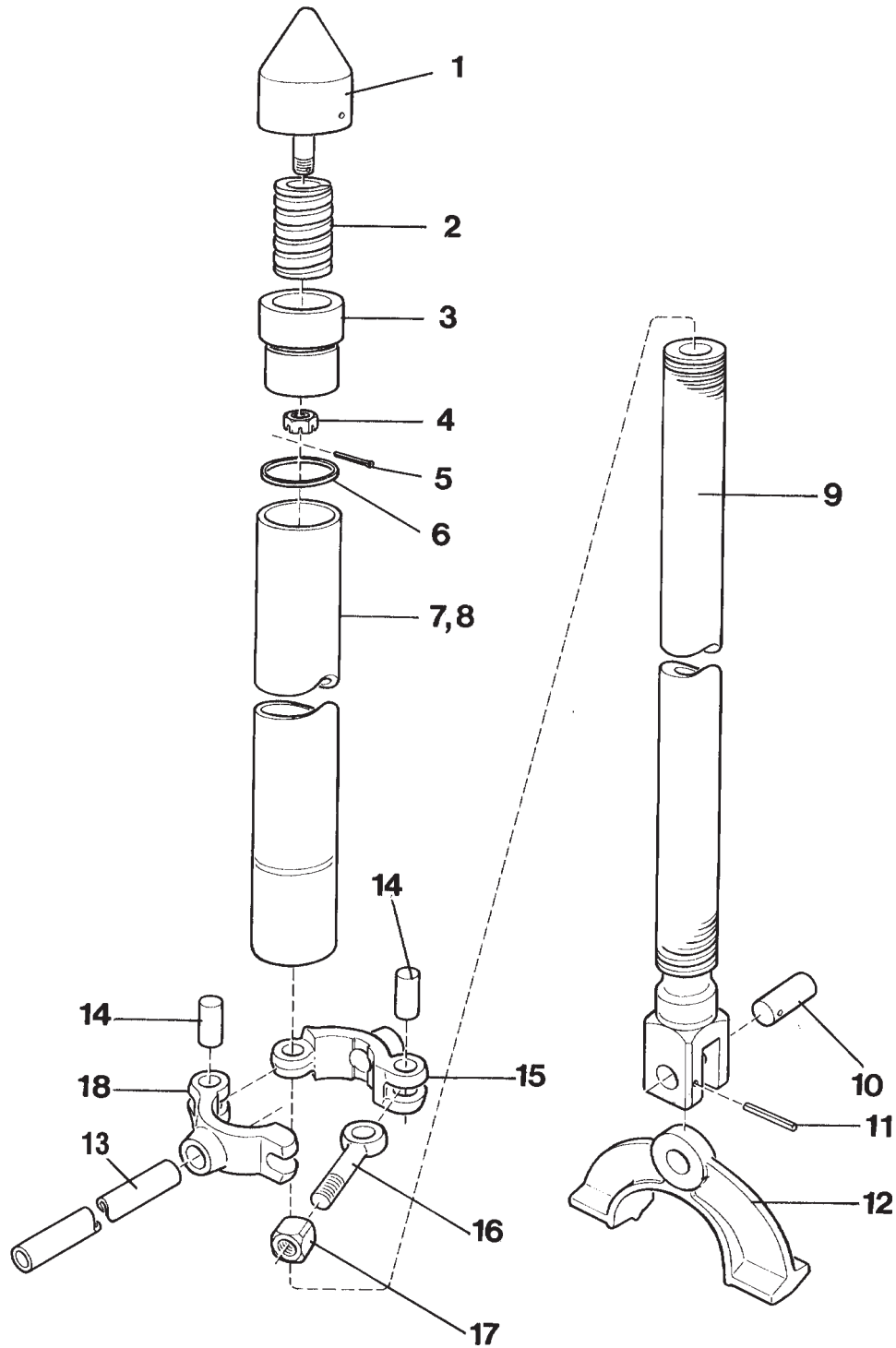
3144 0026 80



3144 0026 80				
Pos. No.	Part number	Quantity	Description	Remark
1	3144 0009 00	1	Peg	
2	3144 0013 00	1	Spring	
3	3144 0012 00	1	Guide	
4	3144 0034 00	1	Nut	
5	0111 1311 00	1	Cotter pin	SP 4 x 40
6	3144 0014 00	1	Spring	
7	3144 0026 00	1	Column	89 MM 7'
9	3144 0004 00	1	Set screw	
10	3144 0008 00	1	Pivot	
11	0108 1336 00	1	Spring pin	FRP 6 x 60
12	3716 0441 00	1	Foot	
13	3144 0019 00	1	Lever	
-	3719 0018 87	1	Stop ring	Complete
14	3144001700	2	- Tap	
15	3719001886	1	- Ring half	
16	3144001800	1	- Bolt	
17	0292131200	1	- Lock nut	7/8" UNC STÅL 8 FZB
18	3719001885	1	- Ring half	

Optional equipment

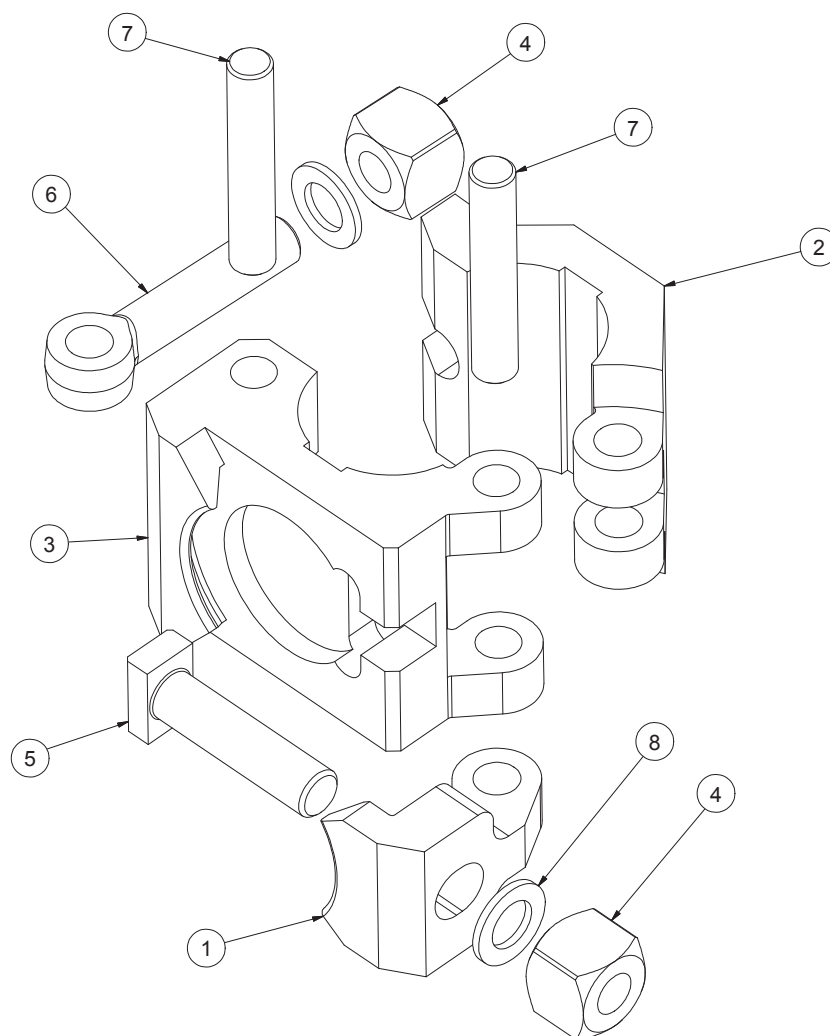
Column, 9ft

3144 0025 80

3144 0025 80				
Pos. No.	Part number	Quantity	Description	Remark
1	3144 0009 00	1	Peg	
2	3144 0013 00	1	Spring	
3	3144 0012 00	1	Guide	
4	3144 0034 00	1	Nut	
5	0111 1311 00	1	Cotter pin	SP 4 x 40
6	3144 0014 00	1	Spring	
8	3144 0025 00	1	Column	89 MM 9'
9	3144 0004 00	1	Set screw	
10	3144 0008 00	1	Pivot	
11	0108 1336 00	1	Spring pin	FRP 6 x 60
12	3716 0441 00	1	Foot	
13	3144 0019 00	1	Lever	
-	3719 0018 87	1	Stop ring	Complete
14	3144001700	2	- Tap	
15	3719001886	1	- Ring half	
16	3144001800	1	- Bolt	
17	0292131200	1	- Lock nut	7/8" UNC STÅL 8 FZB
18	3719001885	1	- Ring half	

Optional equipment

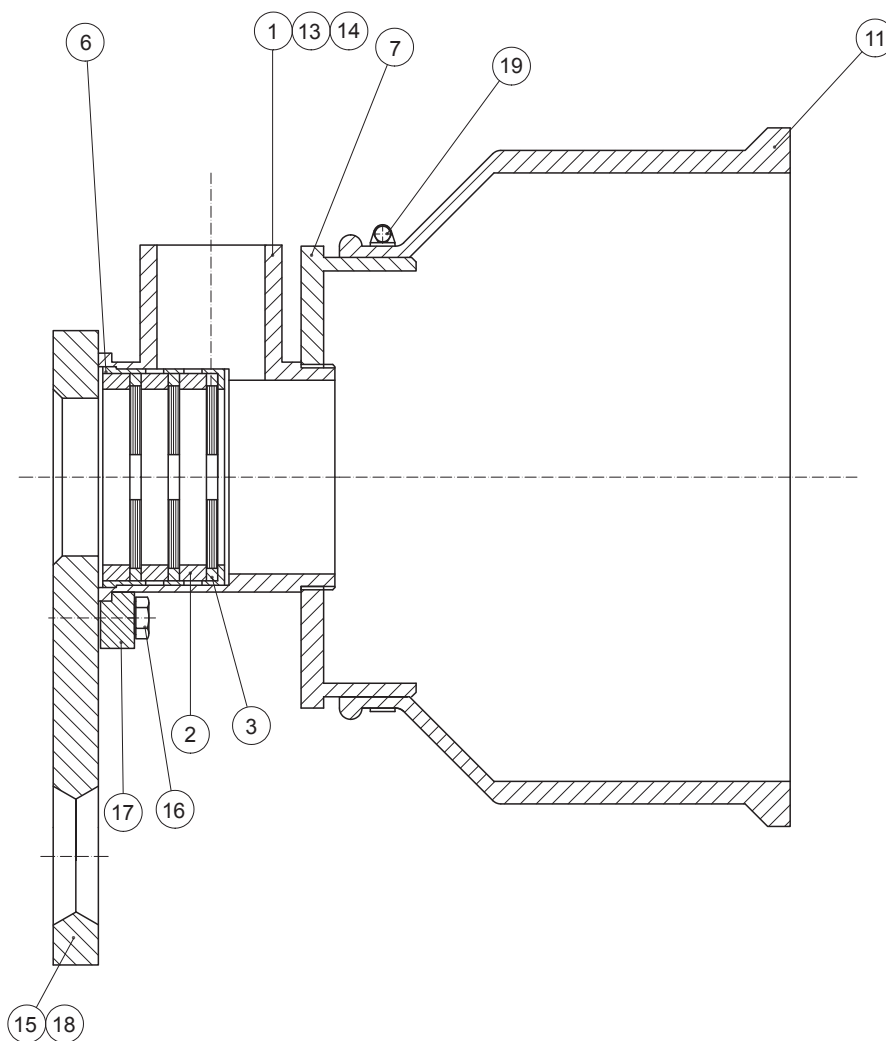
Machine holder

3719 0018 68


3719 0018 68				
Pos. No.	Part number	Quantity	Description	Remark
1	3719 0018 44	1	Column bracket lever	
2	3719 0018 45	1	Column bracket top	
3	3719 0018 46	1	Column bracket bottom	
4	3162 0104 00	2	Nut	
5	3719 0018 84	1	Bolt	
6	3162 0240 00	1	Bolt	
7	3144 0031 00	2	Tap	
8	0301 2210 00	2	Washer	BRFB 26 x 45

Optional equipment

Water collector

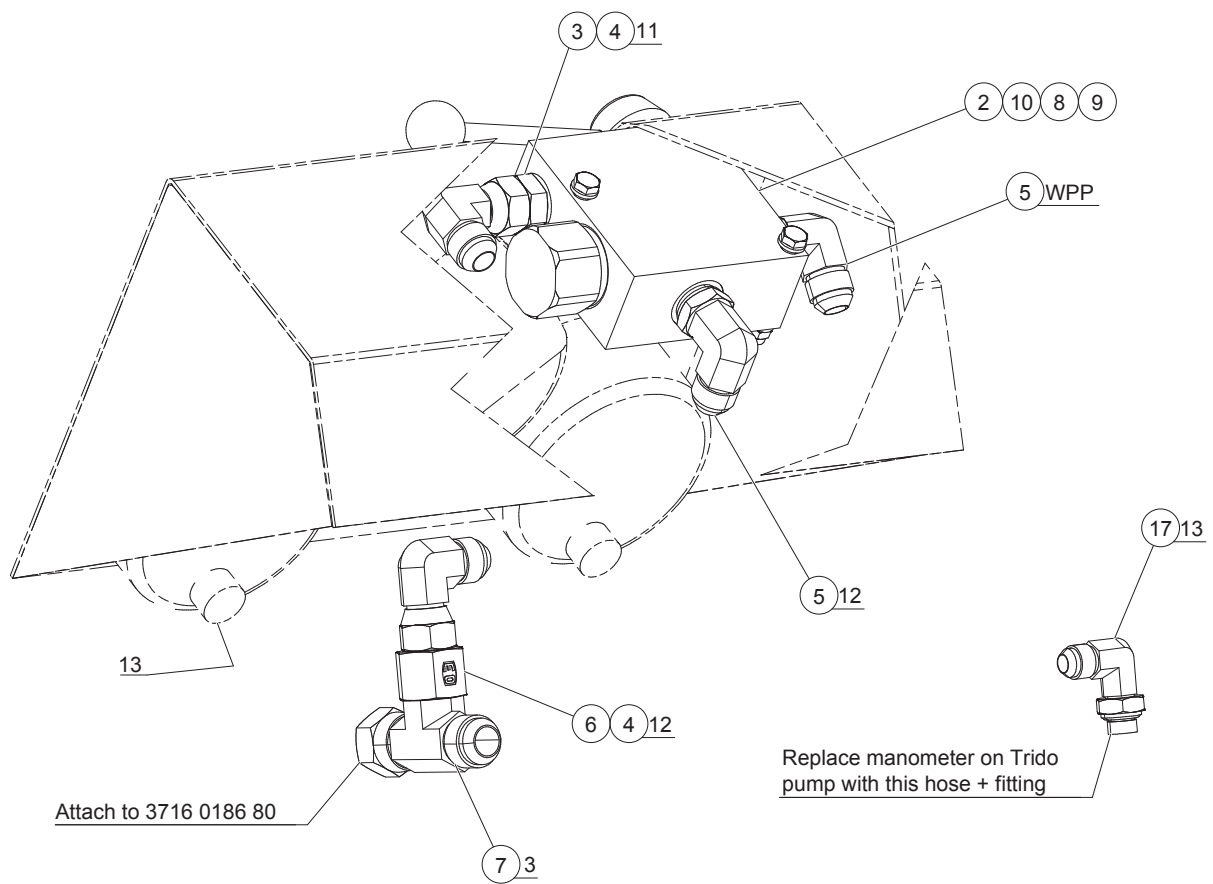
3715 3656 83

3715 3656 83

Pos. No.	Part number	Quantity	Description	Remark
-	3716 0468 00	2	Adjustment screw	
1	3716 2300 00	1	Ejector	
2	3715 3643 00	3	Spacer	
3	3715 8205 00	3	Seal ring	
6	3716 2301 00	1	Bracket	
7	3716 6288 00	1	Adapter	
11	3217 0528 00	1	Bellows	
13	3764 3030 00	1	Hose	L = 2000 mm, 2 1/2"
14	0347 6114 00	1	Hose clip	ABA 58-75
15	3716 0383 00	1	Bracket	
16	0147 1363 03	2	Screw	M6S 10 x 30 ISO4017 FZB
17	3715 0108 00	2	Washer	
18	0147 1407 03	4	Screw	M6S 12 x 60
19	0347 6123 00	1	Hose clip	205 x 232

Optional equipment

Trido kit

3719 0059 32



3719 0059 32				
Pos. No.	Part number	Quantity	Description	Remark
1	8492 0214 42	1	Trido 45 H	
2	3719 0058 49	1	Hydraulic flow valve	3-WAY
3	3176 6512 00	1	Nipple	R 3/8 - UN 3/4
4	3176 3060 00	2	Elbow	UN 3/4"
5	3176 6344 00	2	Elbow	UN 3/4 x R 3/8 90GR
6	3176 7336 00	1	Nipple	UN 3/4 x 7/8
7	3176 6590 00	1	Tee	UN 7/8 x UN 7/8
8	0301 2321 00	4	Washer	BRFB 6.4 x 12.5 x 1.5
9	0291 1128 15	2	Lock nut	M6 fzb ISO 7040
10	0147 1256 03	2	Screw	M6S 6 x 60 FZB
11	3719 0059 39	1	Hose kit	TRIDO, DIAMEC 232
12	3716 5565 27	1	Sign	CONTROL VALVE FLUSHPUMP
13	3176 6348 00	1	Nipple	UN 9/16 x R 1/4

Optional equipment

Hose kit for Trido

3719 0059 39

3719 0059 39					
Pos. No.	Part number	Quantity	Diameter	Length	Use
11	0574 1294 11	1	3/8"	6 000 mm	
12	0574 1251 11	1	3/8"	200 mm	
13	5112 3049 62	1	1/4"	6 000 mm	
WPDR	5112 3049 62	1	1/4"	6 000 mm	
WPP	0574 1294 11	1	3/8"	6 000 mm	
WPT	0574 2294 11	1	1/2"	6 000 mm	

